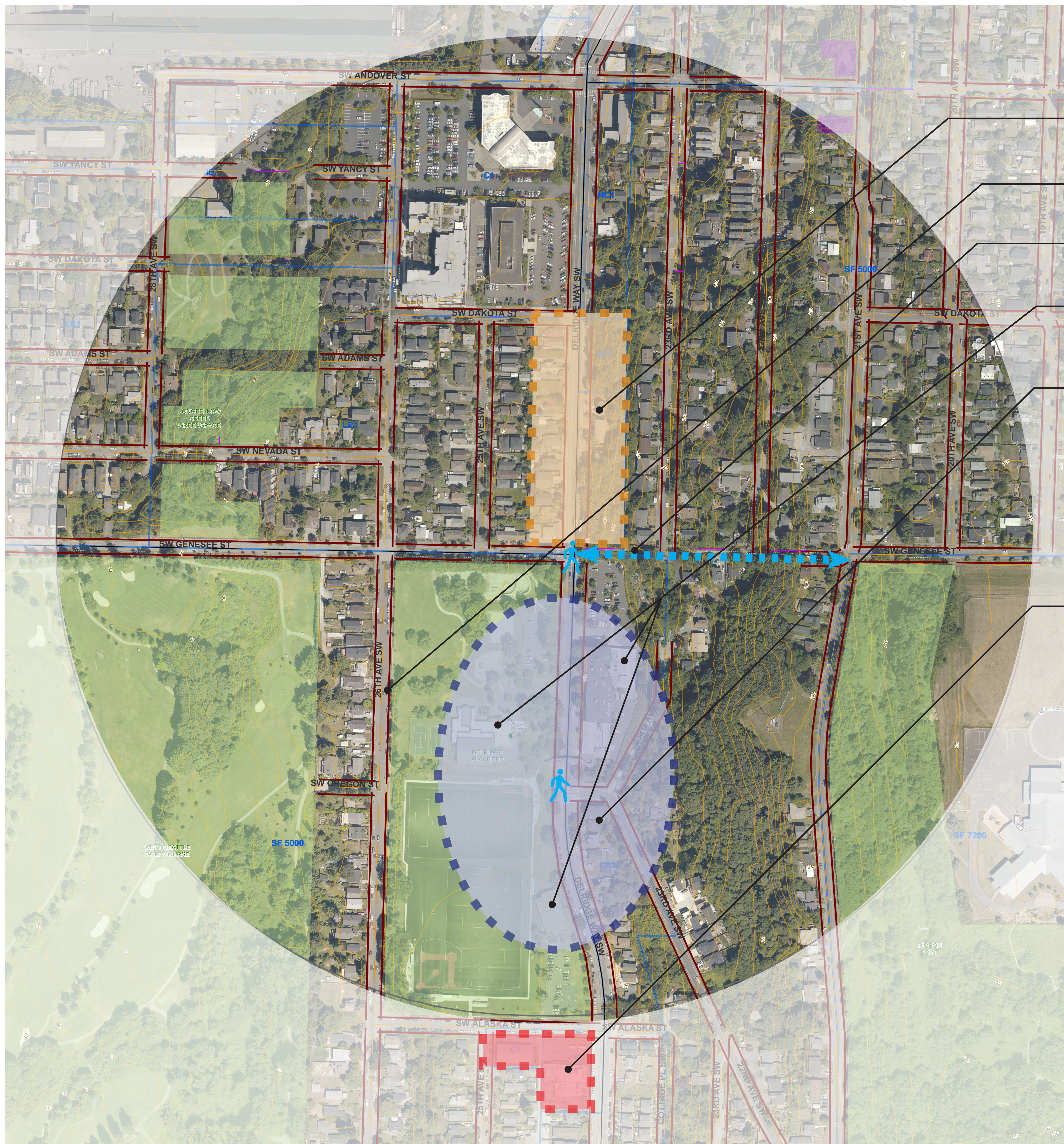


# Campus Node

## Campus Node: Cultural Arts, Recreation & Services

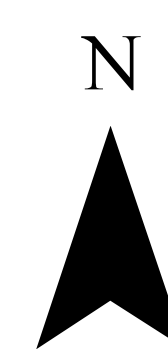
- Improve visibility with design and art
- Focus programming and facilities to ensure they serve the entire community including historically underrepresented
- Improve physical connections (crossing of Delridge) between sites.



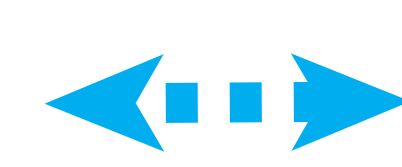
- Gauge interest in higher density residences
- Improve Safety on 26th
- Improve lighting & visibility
- Work with Parks to identify community center programming needs
- Expand & improve programs, & support coordination between agencies. Explore ways for the design of streetscape, landscaping, buildings and public art to reflect cultures in Delridge.
- Consider how local "maker" craft businesses can be attracted to commercial areas

### Legend

- Swimming Pools
- Branch Libraries
- Community Centers
- Public School
- Stairway
- Sidewalks
- 1/4 mile buffer
- Pavement Edge
- Parks
- City Property - Subject Parcels Dept
- Topography - 10 Foot
- Zoning - Category



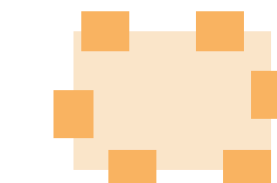
Crosswalk/intersection improvement



Sidewalk/streetscape improvements



Commercial mixed use areas



Residential areas



Existing Greenways



Planned Greenways